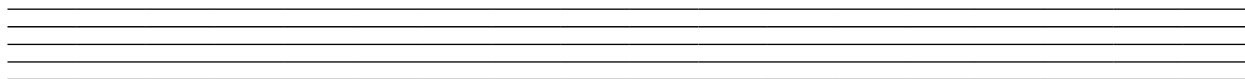


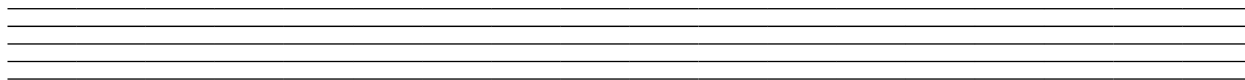
Music Theory Grade 2 level.

Bangor¹
William Tans'ur

1. How many beats in a bar are there in this tune? _____
2. In what key is it written? _____
3. This tune is in a minor key. Which major key has the same key signature? _____
4. Find a tonic chord (i.e. c minor) and circle it.
5. Write the names of the notes in the tenor part in bars 3 and 4 above the staff.
6. Write bars 3 and 4 of the alto part on the staff below BUT write them in the bass clef. Write them so that they will sound exactly the same. Remember time signature and key signature.

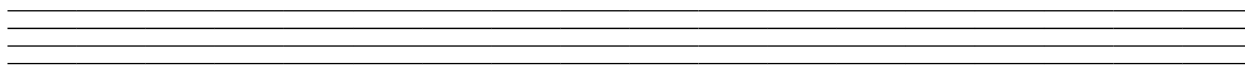
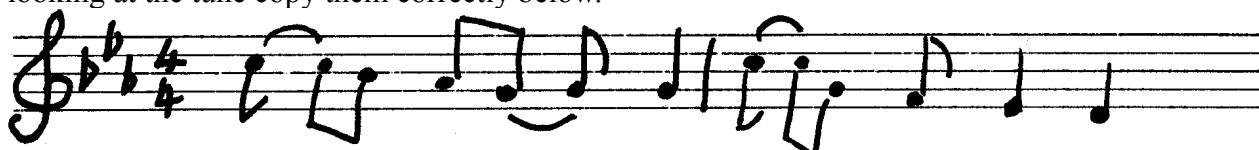


7. On the staff below write bars 1 and 2 of the bass part but in 4/2 time. Write the key and time signatures and watch which direction up place the tails of the notes. Some will need to go upwards because you are writing *only* the bass line and do not need to accommodate the tenor part.



8. What is the melodic interval between the first two notes of the bass in bar 2? _____

10. These bars (6-7) have been written down with notes incorrectly beamed and grouped. Without looking at the tune copy them correctly below.



11. Learn the following three musical terms:

a - at, to, by, for, in the style of

al or *alla* - to the, in the manner of (e.g. *alla marcia*: in the manner of a march)

allargando - broadening (getting a little slower and perhaps a little louder)

William Tans'ur (1706-1783) was a travelling psalmody teacher who would arrive in a village, give a course of instruction to the singers in the church choir, sell some of his many publications and then move on. He wrote a music instruction manual and edited several collections of tunes.



¹ The score and audio of this tune is on CD8 of *The Mothers' Companion* in the "Tour of the Bible" section.